

Various products to support your medical product process needs—from valves to packaging machines.

Machinery and equipment for pharmaceutical drug manufacturing processes

We support the automation of a wide range of medical products.

Provides environment-focused fluid control

Fluid control

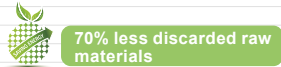


CKD—the world's top manufacturer of fluid control products



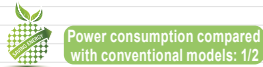
For AGD N2 Control

High corrosion resistance and long service life (track record of 4 million cycles)
Ni-Co alloy diaphragm



SPK Steam Valve

1,000,000 operation durability—the best in the industry for steam valves!



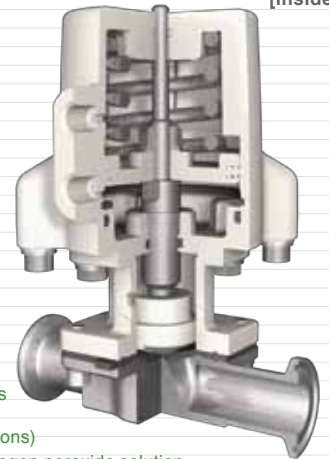
[Appearance]



SWD Sanitary Valve

Flow path helps to prevent fluid buildup, while the structure of the exterior seal offers high reliability. Diaphragm replacement without the stress

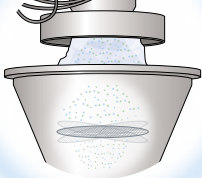
[Inside]



- Superior fluid installability and washability
- Smooth shape helps to prevent water drops and dust from building up
- Ferrule fittings (ISO2852 standard dimensions)
- Fluororesin coating can be washed in hydrogen peroxide solution
- Downsized actuator and low pilot pressure

Energy saving Space saving

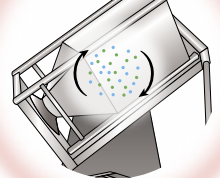
Material weighing



Granulation



Mixing



Air pressure control

Significantly improves maintainability



A full line-up of products that make maintenance easy

SHD Heatless Dryer



- Ultra dry air (-60°C to 72°C) can be easily supplied
- Directly manages the pressure dew point using numeric values
- No need to worry about corrosion. Stainless steel tower adopted
- Air compressor can be connected directly
- Uses energy-efficient purge mechanism



In-stop Needle Valve

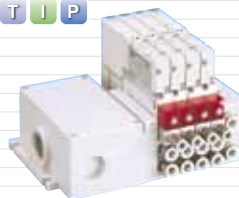
W4G2

Capable of replacing valves without stopping air sources, for use in plants and other environments in which the overall manifold pressure must not drop.



Main line filter

AF4000/5000
Low pressure loss. Provides clean and high quality air to help eliminate oil.



Flexible reproducibility!

Easy reproducibility!

DVL

Speed controller shows the set flow rate. Flow rate adjustment just as you expect!



Air Panel

Can reduce assembly ordering costs. Contact us for air panels to meet your needs.



We offer total support for medical product manufacturing, based on our superior ability to engineer inspection devices, packaging machines, and pneumatic/fluid control products.

We offer a range of highly functional products in order to make your products safe and secure.

For packaging processes with reduced environmental load

Automated machine

Well-established automated machine with a long track record with major medical product manufacturers



Medical Blister MBP-500M



- Compatible with pre-filled syringes
- Medical blister packaging machine capable of switching products in 60 mins.

Eco Blister Pack FBP-300E

Thoroughly supports high-mix low-volume production. Dramatically improves production efficiency and product switching.



- The ultimate packaging system to reduce energy and save resources
Air consumption **50% down** Power consumption **20% down**
- Perfect noise control and maintenance
- Molds easily switched without any tools
- Designed for easy cleaning

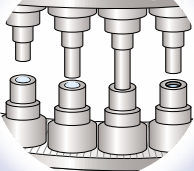


Flash Patri FP620

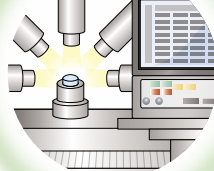


- Electronic eye discerns thin objects of only 25 μm—the thickness of human hair (Foreign matter inspection machine for FTP sheets/tablets) [Inspection items] Pill braking, fragment mixing, shape/size differences, foreign matter, etc.

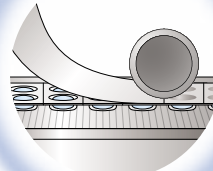
Tableting



Inspection



Packaging



Supports a wide range of motions

Drive components

Supports a range of motions including rotation and direct acting.

Rotation positioning unit ABSODEX AX Series

- Flexible adjustment of number of divisions and speed
- Easy setup



Electric actuator (Motorless type) ETS Series

- Ball screw drive
- Load capacity: 5 to 150 kg (horizontal)



Provides environmentally-friendly flow rate pressure management

Sensors

Helps to visualize flow rate and pressure for all types of fluids!

PFK

Portable for easy air flow rate inspection—anywhere.



WFK

- Easy operation makes it possible to manage instantaneous flow rate and integrating flow
- Can also check water temperature

FSM2, FCM

Miniature flow rate sensors for all types of gases (including air, argon gas and nitrogen).

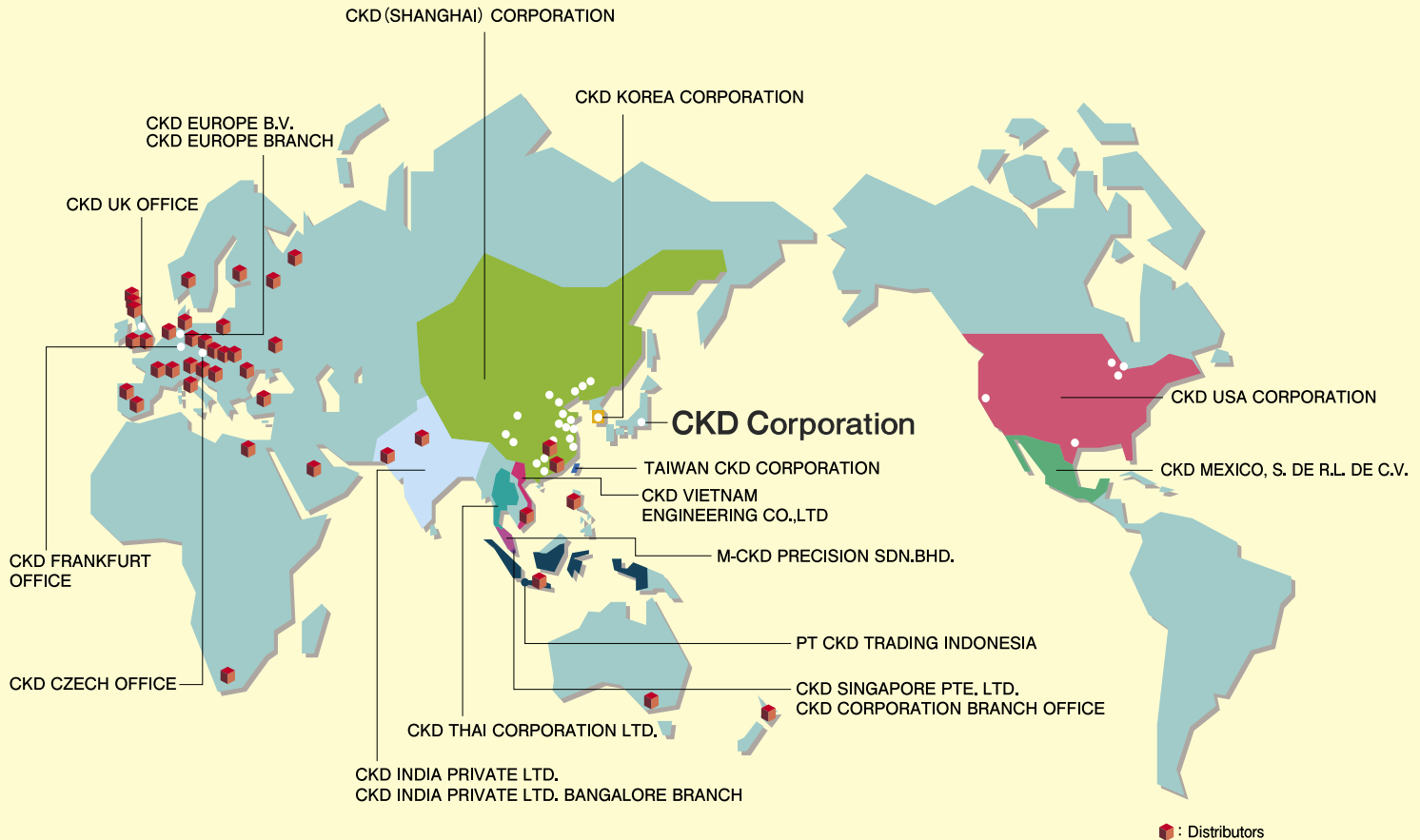
- High speed response of 50 msec or less
- No straight pipes required



WFC

- Capacitance type electromagnetic flow sensor means no obstacles in the flow path.
- The flow path was designed with a short structure, stabilizing flow within the flow path and eliminating the need for straight pipes.





CKD Corporation

Website <http://www.ckd.co.jp/>

U.S.A.

CKD USA CORPORATION

- CHICAGO HEADQUARTERS
4080 Winnetka Avenue, Rolling Meadows, IL 60008, USA
PHONE +1-847-368-0539 FAX +1-847-788-0575
- CINCINNATI OFFICE
- SAN ANTONIO OFFICE
- SAN JOSE OFFICE
- DETROIT OFFICE

Mexico

CKD MEXICO, S. DE R.L. DE C.V.

- Cerrada la Noria No. 200 Int. A-01, Querétaro Park II,
Parque Industrial Querétaro, Santa Rosa Jáuregui,
Querétaro, C.P. 76220, México
PHONE +52-442-161-0624

Europe

CKD EUROPE B.V.

- Beechavenue 125A, 1119 RB Schiphol-Rijk, The Netherlands
PHONE +31-23-554-1490

CKD CORPORATION EUROPE BRANCH

- Beechavenue 125A, 1119 RB Schiphol-Rijk, The Netherlands
PHONE +31-23-554-1490
- CZECH OFFICE
- UK OFFICE
- FRANKFURT OFFICE

Malaysia

M-CKD PRECISION SDN.BHD.

- HEAD OFFICE
Lot No.6, Jalan Modal 23/2, Seksyen 23, Kawasan MIEL,
Fasa 8, 40300 Shah Alam, Selangor Darul Ehsan, Malaysia
PHONE +60-(0)3-5541-1468 FAX +60-(0)3-5541-1533
- JOHOR BAHRU BRANCH OFFICE
- PENANG BRANCH OFFICE

Thailand

CKD THAI CORPORATION LTD.

- SALES HEADQUARTERS
Suwan Tower, 14/1 Soi Saladaeng 1, North Sathorn Road,
Kwaeng Silom, Khet Bangrak, Bangkok 10500, Thailand
PHONE +66-(0)2-267-6300 FAX +66-(0)2-267-6305
- RAYONG OFFICE
- NAVANAKORN OFFICE
- EASTERN SEABOARD OFFICE
- LAMPHUN OFFICE
- KORAT OFFICE
- AMATANAKORN OFFICE
- PRACHINBURI OFFICE
- SARABURI OFFICE

- 2-250, Ouji, Komaki City, Aichi, Japan 485-8551
- PHONE +81-(0)568-74-1338 FAX +81-(0)568-77-3461

Singapore

CKD SINGAPORE PTE. LTD.

- No.33 Tannery Lane #04-01 Hoesteel Industrial
Building, Singapore 347789, Singapore
PHONE +65-67442623 FAX +65-67442486

CKD CORPORATION BRANCH OFFICE

- No.33 Tannery Lane #04-01 Hoesteel Industrial
Building, Singapore 347789, Singapore
PHONE +65-67447260 FAX +65-68421022

India

CKD INDIA PRIVATE LTD.

- Unit No. 607, 6th Floor, WellDone Tech Park, Sector 48,
Sohna Road, Gurgaon-122018, Haryana, India
PHONE +91-(0)124-418-8212

CKD INDIA PRIVATE LTD. BANGALORE BRANCH

- No. 201/B, 2nd Floor, Museum Terraces Apartment, No. 29,
Museum Road, Bangalore-560001, Karnataka, India
PHONE +91-(0)80-4212-7008/7009 FAX +91-(0)80-4212-7007

Indonesia

PT CKD TRADING INDONESIA

- Menara Bidakara 2, 18th Floor, Jl. Jend. Gatot Subroto Kav.
71-73, Pancoran, Jakarta 12870, Indonesia
PHONE +62 21-2938-6601 FAX +62 21-2906-9470

Vietnam

CKD VIETNAM ENGINEERING CO.,LTD.

- 18th Floor, CMC Tower, Duy Tan Street, Cau Giay
District, Hanoi, Vietnam
PHONE +84-4-37957631 FAX +84-4-37957637

Taiwan

台灣喜開理股份有限公司

TAIWAN CKD CORPORATION

- 16F-3, No. 7, Sec. 3, New Taipei Blvd., Xinzhuang Dist.,
New Taipei City 242, Taiwan
PHONE +886-(0)2-8522-8198 FAX +886-(0)2-8522-8128
- 新竹營業所 (HSINCHU OFFICE)
- 台中營業所 (TAICHUNG OFFICE)
- 台南營業所 (TAINAN OFFICE)

China

喜開理(上海)機器有限公司

CKD(SHANGHAI)CORPORATION

- 營業部 / 上海浦西事務所 (SALES HEADQUARTERS / SHANGHAI PUXI OFFICE)
Room 601, 6th Floor, Yuanzhongkeyan Building, No. 1905
Hongmei Road, Xinhui District, Shanghai 200233, China
PHONE +86-(0)21-61911888 FAX +86-(0)21-60905356
- 上海浦東事務所 (SHANGHAI PUDONG OFFICE)
- 無錫事務所 (WUXI OFFICE)
- 杭州事務所 (HANGZHOU OFFICE)
- 寧波事務所 (NINGBO OFFICE)
- 南京事務所 (NANJING OFFICE)
- 蘇州事務所 (SUZHOU OFFICE)
- 昆山事務所 (KUNSHAN OFFICE)
- 北京事務所 (BEIJING OFFICE)
- 天津事務所 (TIANJIN OFFICE)
- 長春事務所 (CHANGCHUN OFFICE)
- 大連事務所 (DALIAN OFFICE)
- 青島事務所 (QINGDAO OFFICE)
- 濟南事務所 (JINAN OFFICE)
- 煙台事務所 (YANTAI OFFICE)
- 瀋陽事務所 (SHENYANG OFFICE)
- 重慶事務所 (CHONGQING OFFICE)
- 成都事務所 (CHENGDU OFFICE)
- 西安事務所 (XI'AN OFFICE)
- 武漢事務所 (WUHAN OFFICE)
- 鄭州事務所 (ZHENGZHOU OFFICE)
- 長沙事務所 (CHANGSHA OFFICE)
- 廣州事務所 (GUANGZHOU OFFICE)
- 深圳西事務所 (WEST SHENZHEN OFFICE)
- 深圳東事務所 (EAST SHENZHEN OFFICE)
- 東莞事務所 (DONGGUAN OFFICE)
- 廈門事務所 (XIAMEN OFFICE)

Korea

CKD KOREA CORPORATION

- HEADQUARTERS
(3rd Floor), 44, Sinsu-ro, Mapo-gu, Seoul 121-856, Korea
PHONE +82-(0)2-783-5201~5203 FAX +82-(0)2-783-5204
- 本原營業所 (SUWON OFFICE)
- 大安營業所 (CHEONAN OFFICE)
- 蔚山營業所 (ULSAN OFFICE)

The goods and/or their replicas, the technology and/or software found in this catalog are subject to complementary export regulations by Foreign Exchange and Foreign Trade Law of Japan.

If the goods and/or their replicas, the technology and/or software found in this catalog are to be exported, law requires that the exporter makes sure that they will never be used for the development and/or manufacture of weapons for mass destruction.